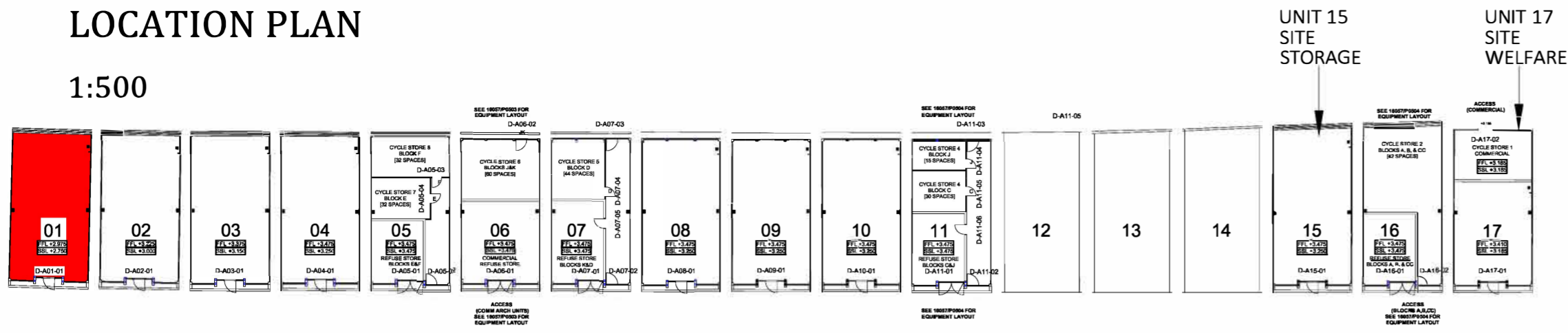


# LOCATION PLAN

1:500

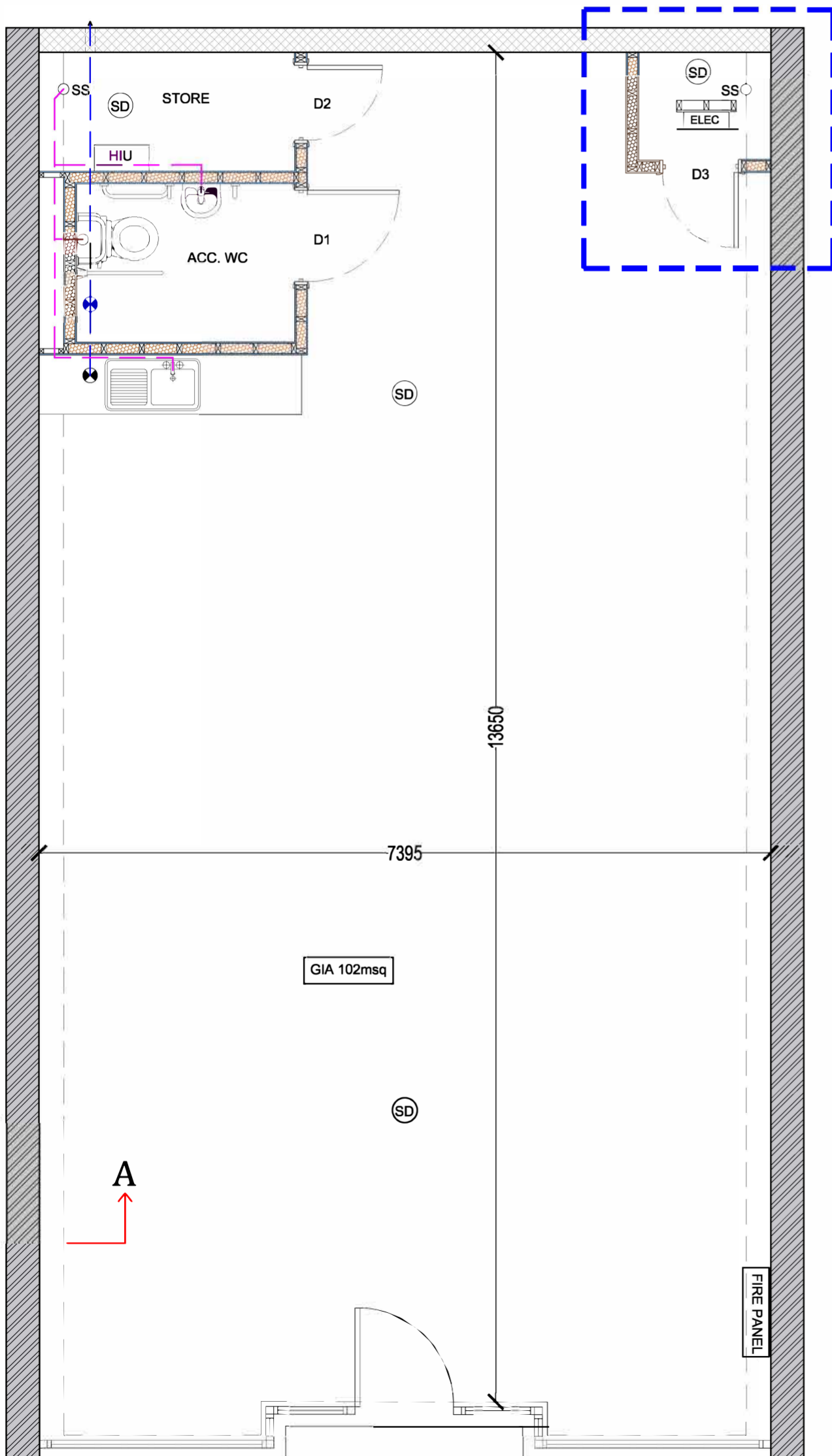


**CDM 2015 RESIDUAL RISKS**

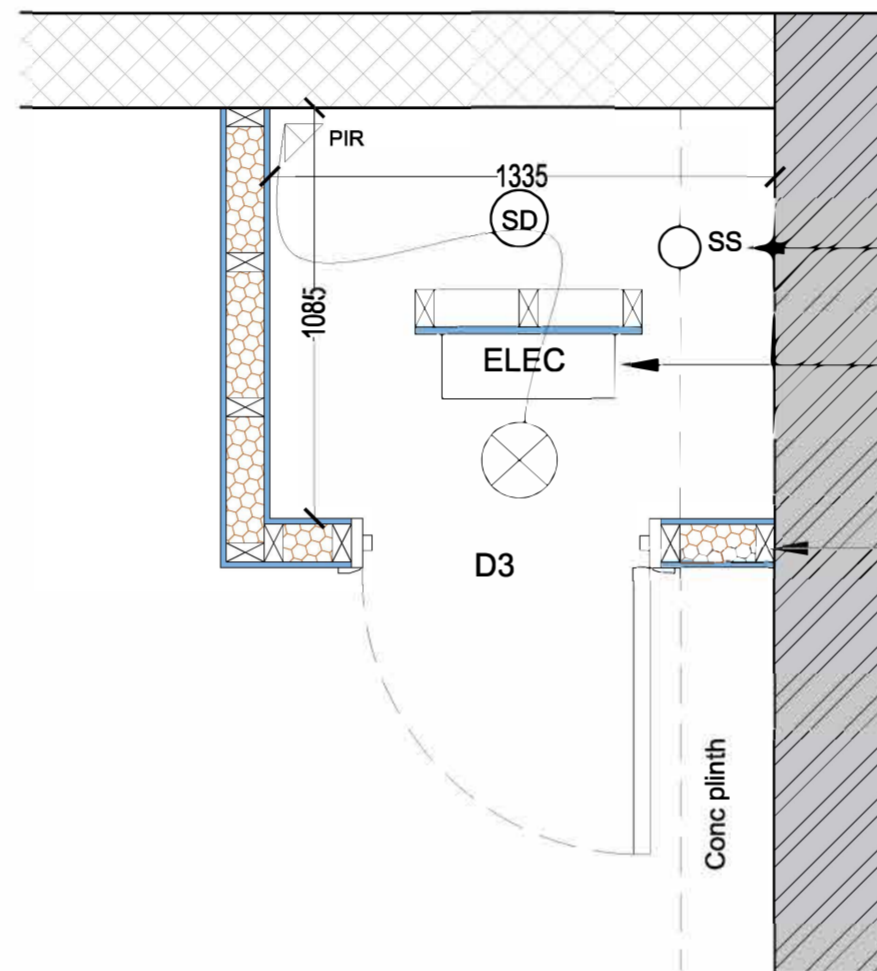
- Demolitions
- Slipping & Tripping on site
- Electrocution through contact with tools/cables
- Manual handling
- Vibration
- Exposure to Dust
- Hot Works
- Open Excavations
- Brick walls under erection
- Falls from heights / scaffolding & towers
- Site Security
- Suspected / Undiscovered Asbestos
- Drainage
- Installation of Heavy Steelwork / Structural Works
- Fire

The above residual risks are for non-standard hazards. For further information relating to the above hazards, please read the pre-construction health and safety information provided by the Principal Designer/Employer. It is assumed that a competent contractor familiar with this type of construction work will be aware of the standard hazards.

## ARCH 01 (NO.18) 1:50



## ELEC CUPBOARD SCALE 1:20



Existing drainage point not used, sealed with cap above ground level

Incoming electrical supply previously installed with distribution board fixed to plinth

Partitions - 50 x 100 C24 studs @ 400mm centres with solid noggins at mid span with head and sole plates. Voids filled with Rockwall partition insulation and lined both sides 12.5mm PB with 3mm plaster finish

### ELECTRICAL WORKS

All electrical work required to meet the requirements of Part P (Electrical Safety) will be designed, installed, inspected by a person competent to do so. Prior to completion the Council should be satisfied that Part P has been complied with. This may require an appropriate BS 7671 electrical installation certificate to be issued for the work by a competent person. All new electrical sockets and switches to be installed at a height of between 450mm to 1200mm above finished floor level. All new light fittings to be low energy LED lamps.

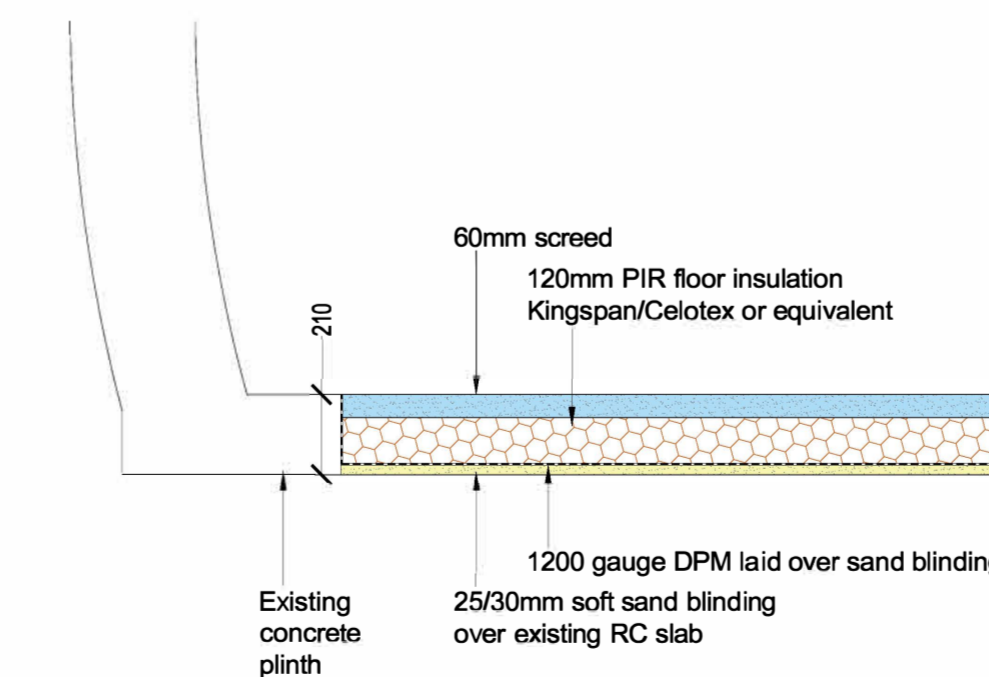
### INTERNAL DOORS

D1 - 1981 x 924 x 44mm flush plywood door with tubular D handle and bathroom lock and kick plates to both sides, push plate internally

D2 - 1981 x 762 x 44mm flush plywood door with tubular D handle and 5-lever lock and kick plates to both sides

D3 - 1981 x 762 x 44mm flush plywood door with tubular D handle and 5-lever lock and kick plates to outer face

## FLOOR DETAIL 01 SECTION A-A 1:20



REV	DESCRIPTION	DRAWN	CHECKED	DATE
REVISIONS				



CLIENT:

PROJECT: **Manors Place Depot**

TITLE: